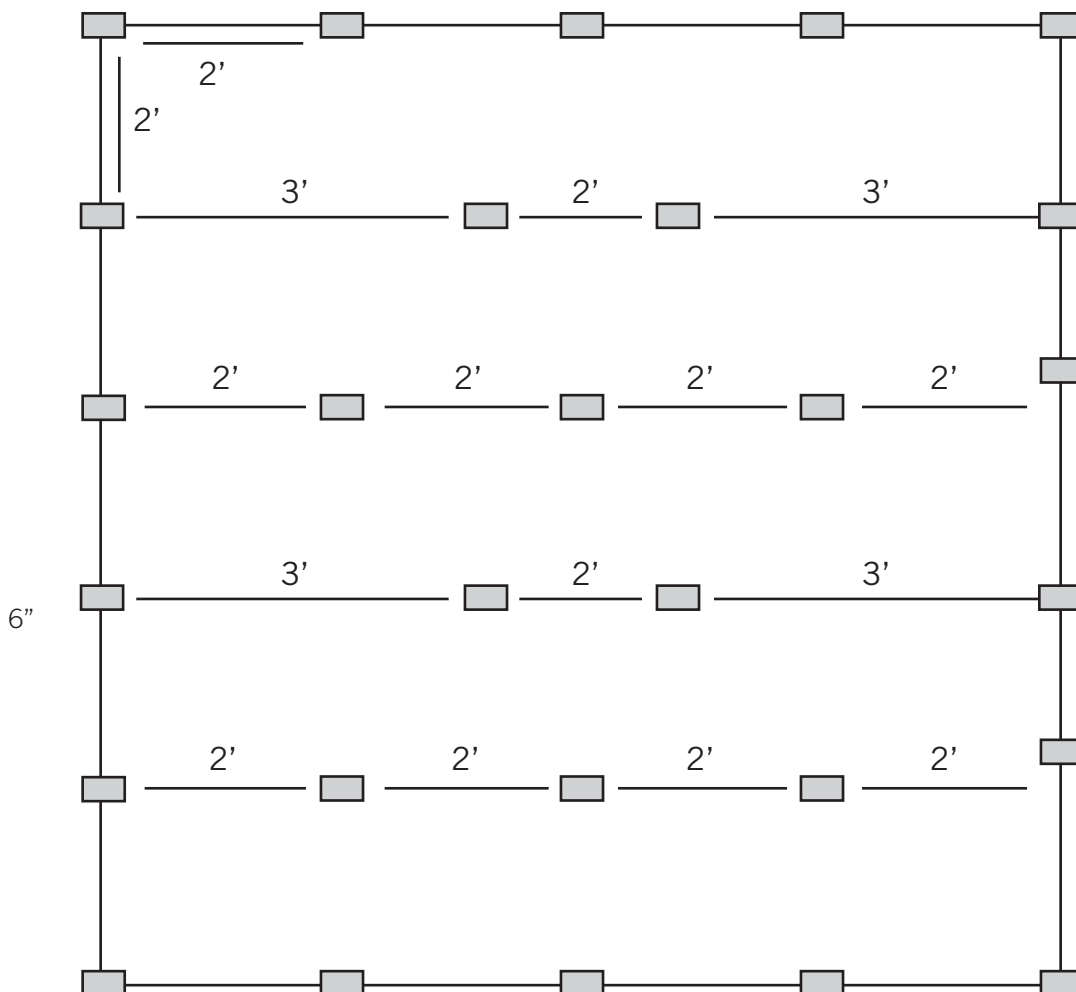




20 barb design for maximum holding power along with a ribbed design for maximum strength.

**ecoduty**  
STAKES

8' Wide Erosion Control Blanket - Staple Layout Guide



**Installation Notes:**

6" Ecoduty™ stake is used on this diagram for maximum holding power on steep terrain. 4" size is for harder ground, while the available 8" size is for sandy or shoreline installations. Keep heads of stakes in line with the slope for water flow. Stakes are designed to biodegrade in 24 -36 months.

Ecoduty™ stake design is versatile enough to be used across various platforms of erosion control blankets on the market. Ecoduty™ stakes are designed to penetrate tough ground without breaking and outperform any stake on the market.